

# Atlas SourceOne eDiscovery Solution

## HIGHLIGHTS

### Business Applications:

- » Legal Holds
- » Early Case Assessment
- » Data Collection
- » Defensible Disposal
- » Retention Management
- » Email Archiving

### Related EMC Products:

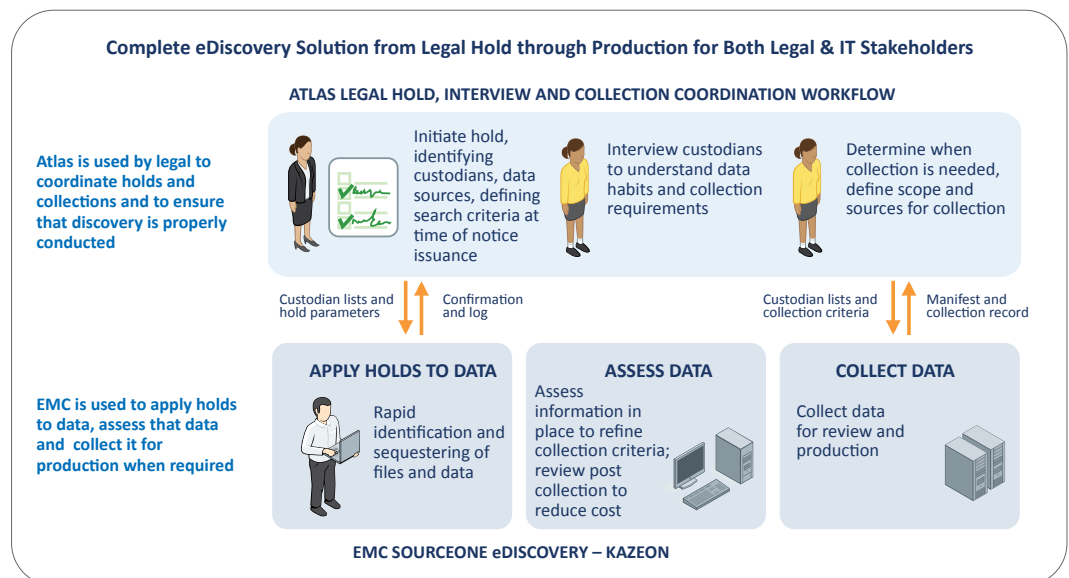
- » SourceOne eDiscovery
- » Kazeon
- » Documentum

Information governance is the way to mitigate e-discovery problems. — Gartner

PSS Systems and EMC provide companies with a comprehensive enterprise solution for reducing discovery risk and cost and reducing data management cost by reducing data volume. According to Gartner, information governance is the way to mitigate e-discovery problems; companies without an information governance strategy will spend a third more on e-discovery than those with content archiving solutions. At the same time, IDC projects data volume will increase by a factor of 44 over the next ten years, dramatically escalating both risk and cost. An essential part of any information governance strategy is the ability to associate legal obligations and information value to information assets to ultimately dispose of data. Using Atlas and EMC SourceOne solutions, companies can ensure reduce legal risk, discovery costs and data management costs with rigorous compliance and defensible disposal.

### Legal Holds, Collection & Case Assessment

Atlas and EMC Kazeon integrate to provide a seamless workflow for all discovery activities from legal hold through case assessment. Matters and their attributes such as ID numbers, attorneys, and custodians are passed as hold and collection instructions directly to Kazeon so there is no need to re-key them; this increases accuracy, reduces effort and improves integrity of the process. Attorneys and paralegals using Atlas can quickly and independently implement legal holds on files spread across the enterprise and collect efficiently when required. This exchange of custodians and parameters also enables assessment of data in place to narrow the scope of collection and post collection review to reduce the amount of data produced.

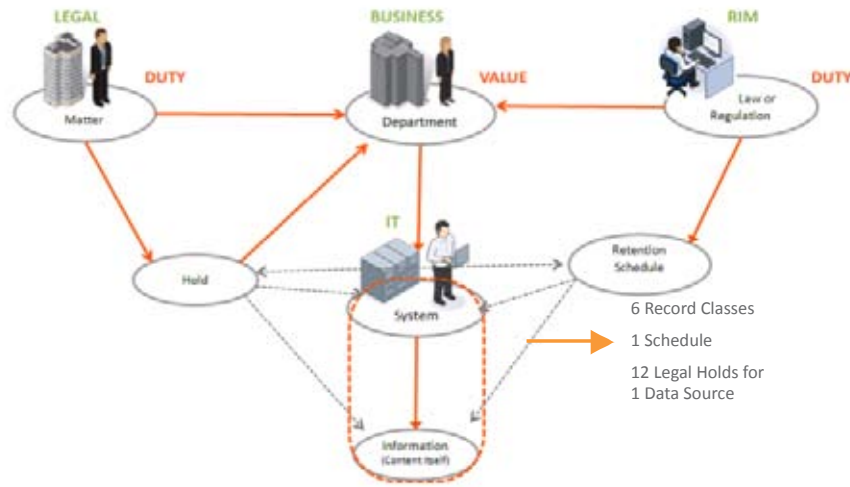


### Email Hold in Place

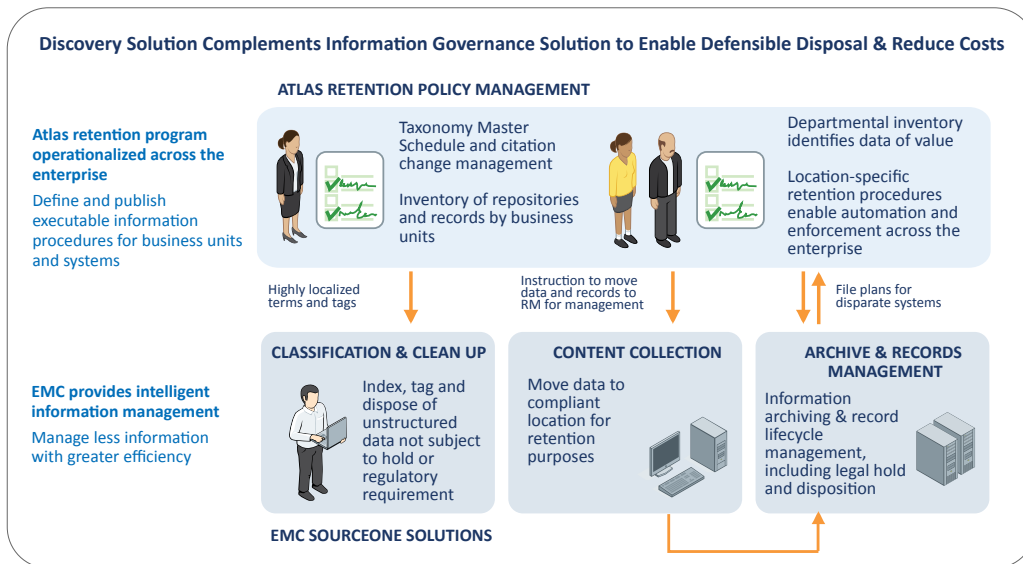
One of the most challenging problems for companies is the volume of email and the difficulty segregating emails that must be preserved from routine messages that can be deleted. By federating legal holds defined and managed in Atlas to the SourceOne email archive, custodian emails can be placed on hold as soon as the hold is defined. This enables companies to manage emails not on hold more efficiently, including retiring or disposing of them at the end of their lifecycle.

### Rigorous Compliance with Defensible Disposal

To define end-of-life for all information (such as SharePoint, email, file share and application data, not just records in repositories) that work in concert and compliance with your legal hold and regulatory obligations, Atlas ERM enables companies to easily define retention periods and schedules applicable to many data sources and department for automated execution.



These schedules can be propagated to EMC Kazeon and SourceOne systems to identify, classify, move, retain and dispose of information much more efficiently. The Atlas system provides IT with a view of legal holds and retention schedules per data source and employee as well as efficient taxonomy, schedule and law management for records management staff.



Used together, Atlas and EMC Intelligent Information Management solutions can help clean up legacy data and defensibly dispose of data in the normal course of business to materially reduce data management and discovery costs.



To learn more, please visit:  
[www.pss-systems.com](http://www.pss-systems.com)

PSS, Atlas and the PSS and Atlas logos are registered trademarks of PSS Systems. This information is not intended as legal advice. The only warranties for PSS Systems products and services are set forth in the express warranty statements accompanying such products and services. All rights reserved.  
 ©2010 Atlas SourceOne eDiscovery Solution 062010v1